

Numéro HER  
117

## Identification

Nom N2 Lesley	Morphotype C1 (Podophage)	Autres désignations N2	
------------------	------------------------------	---------------------------	--

## Taxonomie

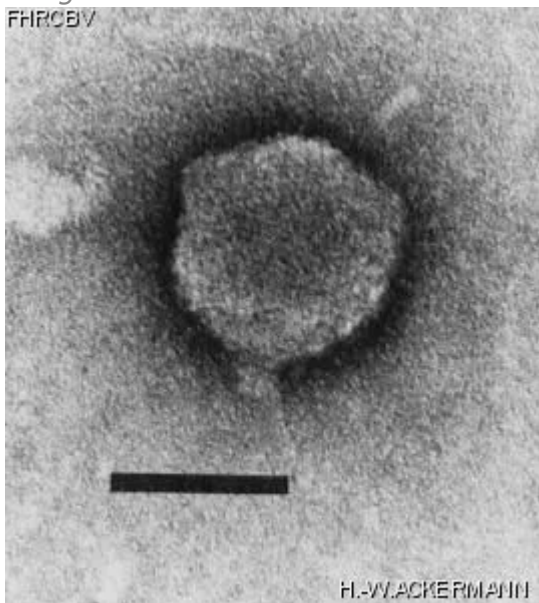
Domaine <i>Duplodnaviria</i>	Règne <i>Heunggongvirae</i>	Embranchement <a href="#">Uroviricota</a>	Classe <i>Caudoviricetes</i>
Ordre	Famille	Genre	Espèce

## Images

Photo en microscopie électronique

Image

FHRCBV



Description de l'image

Magnification: 297,000X

Bar: 50 nm

Staining: UAB

<p><i>Caractéristique</i></p> <p>Plaques: 0.1mm, veiled.  Typing phage.  Lesley: YSM double agar layer, 48h.</p>	<p><i>Séquence génomique</i></p> <p>Désactivé</p>								
<p><b>Conditions de propagation</b></p>									
<p><i>Hôtes bactériens</i></p> <p>1117</p>									
<p><i>Référence</i></p> <p>Can. J. Microbiol. 1982. 28:180-189.</p>									
<p><i>Remarque</i></p>									
<p><b>Historique</b></p>									
<p><i>Historique</i></p> <table border="0"> <tr> <td data-bbox="107 1052 334 1083"><b>Received from</b></td> <td data-bbox="1101 1052 1175 1083"><b>Date</b></td> </tr> <tr> <td data-bbox="107 1098 734 1360"> S. M. Lesley,  Chemistry and Biology Research Institute,  Research Branch,  Agriculture Canada,  Ottawa, ON. Canada,  K1A 0C6. </td> <td data-bbox="1101 1098 1273 1129">06-21-1982</td> </tr> <tr> <td data-bbox="107 1451 282 1482"><b>Isolated by</b></td> <td data-bbox="1101 1451 1175 1482"><b>Date</b></td> </tr> <tr> <td data-bbox="107 1497 568 1528">S. M. Lesley and I. Sinha, CRBI.</td> <td data-bbox="1101 1497 1224 1528">05-1979</td> </tr> </table>		<b>Received from</b>	<b>Date</b>	S. M. Lesley, Chemistry and Biology Research Institute, Research Branch, Agriculture Canada, Ottawa, ON. Canada, K1A 0C6.	06-21-1982	<b>Isolated by</b>	<b>Date</b>	S. M. Lesley and I. Sinha, CRBI.	05-1979
<b>Received from</b>	<b>Date</b>								
S. M. Lesley, Chemistry and Biology Research Institute, Research Branch, Agriculture Canada, Ottawa, ON. Canada, K1A 0C6.	06-21-1982								
<b>Isolated by</b>	<b>Date</b>								
S. M. Lesley and I. Sinha, CRBI.	05-1979								
<p><i>Source</i></p> <p>Local soil, Ottawa, Ontario, Canada.</p>									
<p><i>Dernière mise à jour</i></p> <p>2024-01-16</p>									