

Numéro HER  
118

## Identification

Nom N3 Lesley	Morphotype A1 (Myophage)	Autres désignations N3, 6a
------------------	-----------------------------	-------------------------------

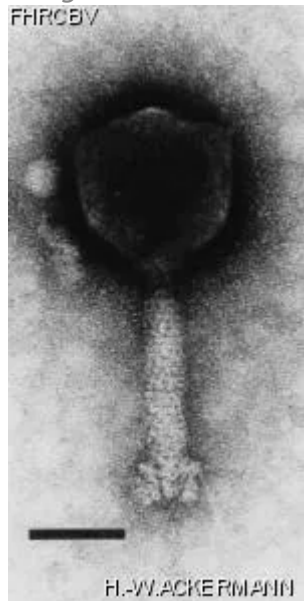
## Taxonomie

Domaine <i>Duplodnaviria</i>	Règne <i>Heunggongvirae</i>	Embranchement <a href="#"><i>Uroviricota</i></a>	Classe <i>Caudoviricetes</i>
Ordre	Famille	Genre <i>Emdodecavirus</i>	Espèce <i>Emdodecavirus N3</i>

## Images

Photo en microscopie électronique

Image



Description de l'image

Magnification: 297,000X

Bar: 50 nm

Staining: UAB

<p><i>Caractéristique</i></p> <p>Plaques: 0.1- 0.5mm, clear.  Typing phage.  Lesley: YSM double agar layer, 48h.  Lysate contains variable amount of NM1-type phage.</p>	<p><i>Séquence génomique</i></p> <p>Activé</p>								
<p><b>Conditions de propagation</b></p>									
<p><i>Hôtes bactériens</i></p> <p>1118</p>									
<p><i>Référence</i></p> <p>Can. J. Microbiol. 1982. 28:180-189.</p>									
<p><i>Remarque</i></p>									
<p><b>Historique</b></p>									
<p><i>Historique</i></p> <table border="0"> <thead> <tr> <th data-bbox="110 1144 332 1176"><b>Received from</b></th> <th data-bbox="1104 1144 1177 1176"><b>Date</b></th> </tr> </thead> <tbody> <tr> <td data-bbox="110 1186 933 1312">S. M. Lesley, Chemistry and Biology Research Institute, Research Branch, Agriculture Canada, Ottawa, ON. Canada, K1A 0C6</td> <td data-bbox="1104 1186 1274 1218">06-21-1982</td> </tr> <tr> <td data-bbox="110 1396 284 1428"><b>Isolated by</b></td> <td data-bbox="1104 1396 1177 1428"><b>Date</b></td> </tr> <tr> <td data-bbox="110 1438 568 1480">S. M. Lesley and I. Sinha, CRBI.</td> <td data-bbox="1104 1438 1226 1480">03-1979</td> </tr> </tbody> </table>		<b>Received from</b>	<b>Date</b>	S. M. Lesley, Chemistry and Biology Research Institute, Research Branch, Agriculture Canada, Ottawa, ON. Canada, K1A 0C6	06-21-1982	<b>Isolated by</b>	<b>Date</b>	S. M. Lesley and I. Sinha, CRBI.	03-1979
<b>Received from</b>	<b>Date</b>								
S. M. Lesley, Chemistry and Biology Research Institute, Research Branch, Agriculture Canada, Ottawa, ON. Canada, K1A 0C6	06-21-1982								
<b>Isolated by</b>	<b>Date</b>								
S. M. Lesley and I. Sinha, CRBI.	03-1979								
<p><i>Source</i></p> <p>Local soil, Ottawa, Ontario, Canada.</p>									
<p><i>Dernière mise à jour</i></p> <p>2024-01-16</p>									