

Numéro HER
251

Identification

Nom φBA-1	Morphotype A1 (Myophage)	Autres désignations	
--------------	-----------------------------	---------------------	--

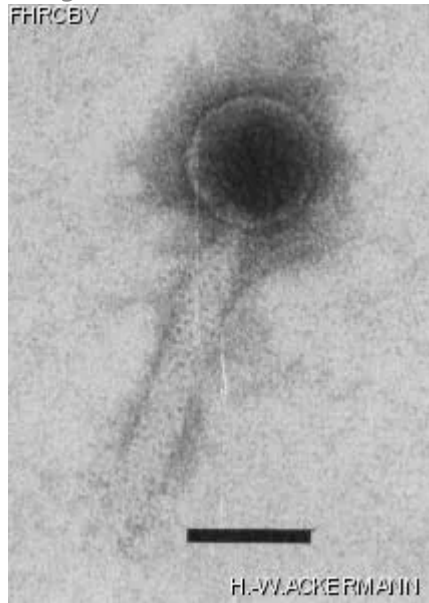
Taxonomie

Domaine <i>Duplodnaviria</i>	Règne <i>Heunggongvirae</i>	Embranchement Uroviricota	Classe <i>Caudoviricetes</i>
Ordre	Famille	Genre	Espèce

Images

Photo en microscopie électronique

Image



Description de l'image

Magnification: 297,000X

Bar: 50 nm

Staining: UA

<p><i>Caractéristique</i></p> <p>Plaques of 0.5mm, target-like.</p>	<p><i>Séquence génomique</i></p> <p>Désactivé</p>								
<p>Conditions de propagation</p>									
<p><i>Hôtes bactériens</i></p> <p>1251</p>									
<p><i>Référence</i></p> <p>Ito, S-I, T. Nishimune, M. Abe, M. Kimoto, and R. Hayashi. 1986. Bacteriocin-like killing action of a temperate bacteriophage ?BA1 of *Bacillus aneurinolyticus*. J. Virol. 59: 103-111.</p>									
<p><i>Remarque</i></p> <p>Lysate contains A1-type phages and contractile tails produced by the propagating strain.</p>									
<p>Historique</p>									
<p><i>Historique</i></p> <table border="0"> <tr> <td data-bbox="107 957 334 989">Received from</td> <td data-bbox="1101 957 1175 989">Date</td> </tr> <tr> <td data-bbox="107 1003 669 1220"> <p>S.-I. Ito Laboratory of Biochemistry Department of Agricultural Chemistry Tokyo University, Bunraku-ku, Tokyo Japan</p> </td> <td data-bbox="1101 1003 1273 1035"> <p>09-10-1986</p> </td> </tr> <tr> <td data-bbox="107 1308 282 1339">Isolated by</td> <td data-bbox="1101 1308 1175 1339">Date</td> </tr> <tr> <td data-bbox="107 1354 841 1478"> <p>S.-I. Ito Then Yamaguchi University, Ube, Yamaguchi 755 Japan</p> </td> <td data-bbox="1101 1354 1273 1386"> <p>02-10-1983</p> </td> </tr> </table>		Received from	Date	<p>S.-I. Ito Laboratory of Biochemistry Department of Agricultural Chemistry Tokyo University, Bunraku-ku, Tokyo Japan</p>	<p>09-10-1986</p>	Isolated by	Date	<p>S.-I. Ito Then Yamaguchi University, Ube, Yamaguchi 755 Japan</p>	<p>02-10-1983</p>
Received from	Date								
<p>S.-I. Ito Laboratory of Biochemistry Department of Agricultural Chemistry Tokyo University, Bunraku-ku, Tokyo Japan</p>	<p>09-10-1986</p>								
Isolated by	Date								
<p>S.-I. Ito Then Yamaguchi University, Ube, Yamaguchi 755 Japan</p>	<p>02-10-1983</p>								
<p><i>Source</i></p> <p>Culture of *B. aneurinolyticus* after mitomycin C induction</p>									
<p><i>Dernière mise à jour</i></p> <p>2024-01-17</p>									